

Application of Steels

Amended Rules

Rules for the Survey and Construction of Steel Ships Parts C, and I

Reason for Amendment

IACS Unified Requirements (UR) S6 specifies requirements related to the application of steels used for the structural members of ships, and ClassNK has already incorporated these requirements into its Rules for the Survey and Construction Steel Ships.

IACS reviewed UR S6, clarified the footnotes and other items in the figures and tables related to the application of steel as well as corrected some other errors. The amended version of the UR was adopted as UR S6 (Rev. 9 Corr.2) in November 2021.

Accordingly, relevant requirements are amended in accordance with UR S6 (Rev.9 Corr.2).

Outline of Amendment

- (1) Adds term for sheer strakes, stringer plates and bilge strakes to example of the typical deck structure of ships with membrane tanks carrying liquefied gases in bulk given as Figure 3.2.2-2 of Part C of the Rules.
- (2) Amends Table 2.1.2-3 in Part I of the Rules to correct spelling errors.
- (3) Amends notes to Table 2.1.2-3 in Part I of the Rules to clarify the breadths of the bilge strakes required to be Grade D steel within $0.4L$ amidships.

“Rules for the survey and construction of steel ships” has been partly amended as follows:

Part C HULL CONSTRUCTION AND EQUIPMENT

Part 1 GENERAL HULL REQUIREMENTS

Chapter 3 STRUCTURAL DESIGN PRINCIPLES

3.2 Materials

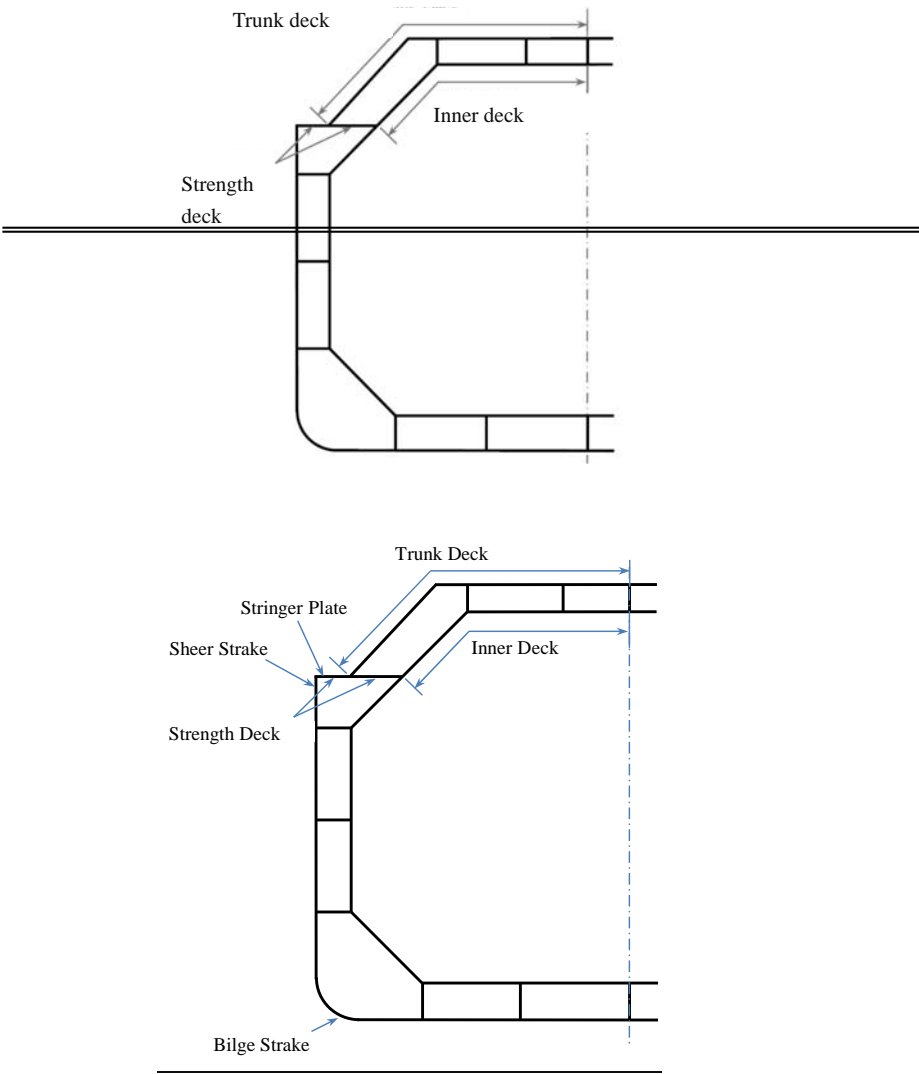
3.2.2 Application of Steels

3.2.2.1 General

(-1 to -8 are omitted.)

Fig. 3.2.2-2 has been amended as follows.

Fig. 3.2.2-2 Typical Deck Structure of Ships with Membrane Tank Carrying Liquefied Gases in Bulk



Part I SHIPS OPERATING IN POLAR WATERS, POLAR CLASS SHIPS AND ICE CLASS SHIPS

ANNEX 1 SPECIAL REQUIREMENTS FOR THE MATERIALS, HULL STRUCTURES, EQUIPMENT AND MACHINERY OF POLAR CLASS SHIPS

Chapter 2 MATERIALS AND WELDING

2.1 Material

2.1.2 Material Classes and Grades*

Table 2.1.2-3 has been amended as follows.

Table 2.1.2-3 Minimum Material Grades for ships with length exceeding 250 m

Structural Member Category	Material Grade
Sheer strake at strength deck ⁽¹⁾	Grade <i>E/EH</i> ⁽²⁾ within 0.4 <i>L</i> amidships
Stringer plate in strength deck ⁽¹⁾	Grade <i>E/EH</i> ⁽²⁾ within 0.4 <i>L</i> amidships
Bilge strake ⁽¹⁾	Grade <i>D/DH</i> ⁽³⁾ within 0.4 <i>L</i> amidships

Notes:

- (1) Single strakes required to be of Grade *D/DH* or Grade *E/EH* as shown in the above table and within 0.4*L* amidships are to have breadths not less than $5L + 800 \text{ mm}$, need not be greater than 1,800 mm, unless limited by the geometry of the ship's design.
- (2) *E* means *KE*, *EH* means *KE32*, *KE36* or *KE40*
- (3) *D* means *KD*, *DH* means *KD32*, *KD36* or *KD40*