

ClassNK PSC Bulletin

Date:	1 October, 2025
No:	NK-PSC-27
Attachment	No / Yes: _____ page(s)

Title:

Defective Isolation Valves of Fire Mains (SOLAS Chapter III / Reg. 10.2.1.4.1 & Reg. 10.2.1.4.4)

Typical deficiency (outline of comment) by PSC:

"Isolation valve on fire main could not be fully closed, as evidenced by a significant amount of water spraying out on main deck while main fire pump was operating with the valve in shut position."

"Isolation valve on fire main could not close tightly, resulting in substantial water leakage from hydrant in E/R."

Port State --- Port: ---

Action taken by PSC: ☐ Detention / ☐ Rectify before Departure / ~~Others (_____)~~

Description:

As evidence of defective isolation valves, water leakage from fire hydrants (in the forward section of a closed isolation valve) has been frequently pointed out by PSCOs recently.

As per the maintenance plan prescribed in SOLAS II-2 / Reg.14.2.2, the fire-fighting systems and appliances are to be tested by crew periodically. During the hose tests for fire mains, condition of each isolation valve is to be confirmed including both the valve itself and the forward piping section after the valve closed.

While the isolation valve is in the closed position and the fire hydrants are open, if the water leakage could not be stopped in the forward piping section, the valve is to be opened and repaired immediately.

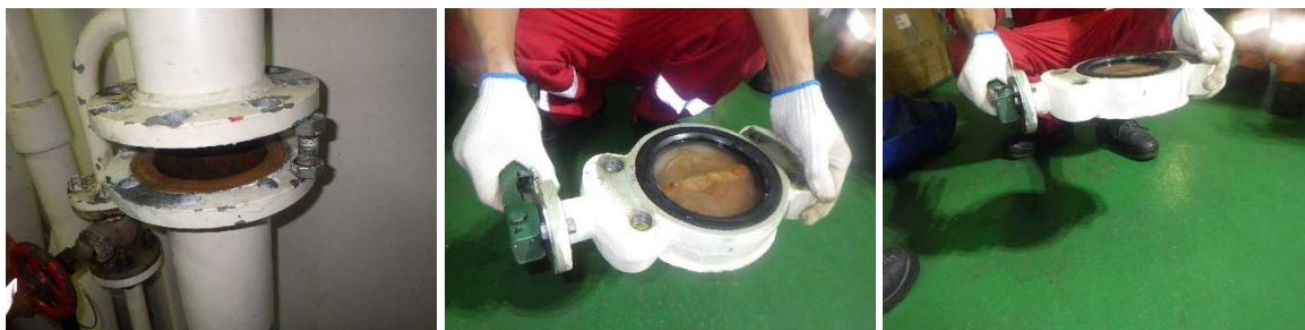


Photo Samples of Fire Main Isolation Valve Maintenance